



## EMERGING VISUAL ARTIST RESIDENCY AWARD JULY 1<sup>st</sup> – SEPTEMBER 30<sup>th</sup> 2019

### ABOUT AN TÁIN ARTS CENTRE

An Táin Arts Centre is an independent arts space in Dundalk, Co. Louth based in the former Táin Theatre, Town Hall, Crowe Street. The centre houses a 350 seat main theatre, a 55 seat studio theatre, a visual arts gallery and two workshop spaces. We share the Town Hall building with Louth County Council and we are kindly supported by Louth County Council and the Arts Council of Ireland.

Established as an independent organisation in 2014, An Táin Arts Centre is a community-focused point of access to arts and culture for the people of North Louth. Dundalk has a thriving visual arts presence, with regular arts events taking place in Creative Spark, Bridge Street Studios, Dundalk Gaol and Louth County Museum among other independent initiatives. At An Táin Arts Centre we hope to complement the programming work of our colleagues and provide additional opportunities and support for artists in the north east.

The staff at An Táin Arts Centre are grounded in community and collaborative practices in performance and visual arts contexts, and this ethos is reflected in our programming, encompassing theatre, film, music and visual arts from local, national and international practitioners. An Táin Arts Centre particularly supports local artists and performers in the programming of their work and additional support is given to artists at the start of their career through An Táin Arts Centre's Emerging Artist Series (Visual Arts), and a Company in Residency Programme (Theatre).

The Basement Gallery is programmed throughout the year with solo, group and community exhibitions. A series of talks, workshops and presentations runs concurrent to our exhibition programme. This has included visual art classes for children and adults, art history lectures, artist talks, artist workshops, gallery tours for school and further education groups, outdoor urban art interventions, and family crafts workshops.

Since our relaunch and inaugural exhibition, Ciaran O'Sullivan's Double Back in August 2014, exhibited work has included Brian Hegarty's I'll be your Mirror, The Album Sleeve Project (2015), Orla Barry's Otherworldly (2015), Paul Woods' Oradour, Elegy for a Town (2016), Els Boghart and Declan Kelly's On the Way / Onderweg (2016), Aileen Hamilton's Chain of Pulses (2017), and Lisa Fingleton's Holding True Ground (2018). To date, there have been four exhibitions in our Emerging Artist series, Aoife Ward's Becoming (2014), Eimear Murphy and Eileen O'Sullivan's In Search of Place (2015), Neil Waters and Inga Kazokait's Hidden Dundalk (2017), and Mark Bourke (2018).

The recipients of the emerging artist residency to date include Una Curley (2016), Roseann Berrill (2017) and Sean McGuill (2018). For more on their work see [www.aintain.ie/visual-artist-in-residence](http://www.aintain.ie/visual-artist-in-residence) #aintainartists

## ABOUT THE EMERGING VISUAL ARTIST RESIDENCY

The programme is open to recent graduates and artists at the start of their career looking to establish a collaborative practice in a community setting. The aim of the residency is to assist artists to research and develop new work and give them the time and space to develop their practice in a community setting.

Part of the residency will include the mentoring of second level students on their portfolio for third level. Aside from this, we are not prescriptive about in the manner in which you work with and in the community, but we would like to see applications that demonstrate a genuine interest in collaboration and public engagement. Applications from individual artists and/or arts collectives working in any visual arts form are welcome.

The resident artist will be provided with the studio space adjoining The Basement Gallery from July 1<sup>st</sup> to September 30<sup>th</sup>, administrative and outreach support, and the opportunity to use the main gallery space for the month of September. The value of the bursary is €2000, which includes a living stipend of €500 per month and a materials bursary of up to €500 (with receipts). The hours of the residency will be Tuesday to Saturday 10.00-16.00, with additional access available with prior agreement. Living accommodation is not included in the residency.

The successful artist or arts collective will be selected by a shortlisting and interview process, based on artist CV, proposal, portfolio, and references.

## HOW TO APPLY

Please email [elaine@antain.ie](mailto:elaine@antain.ie) with **one pdf document** including the following details:

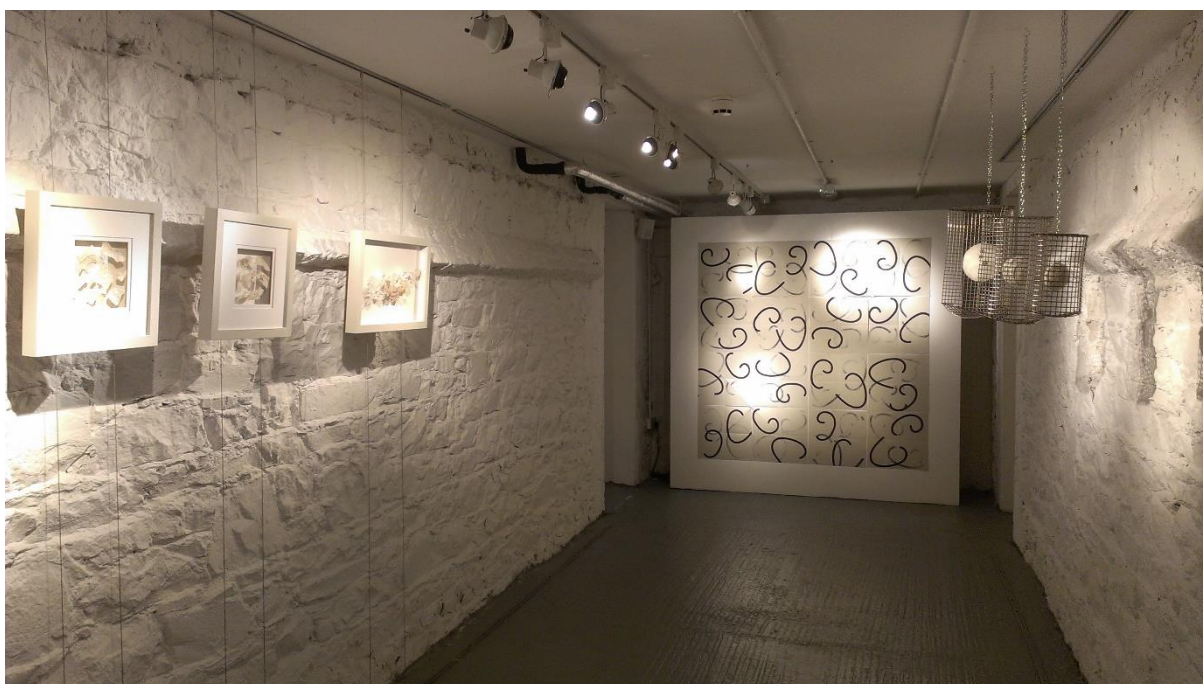
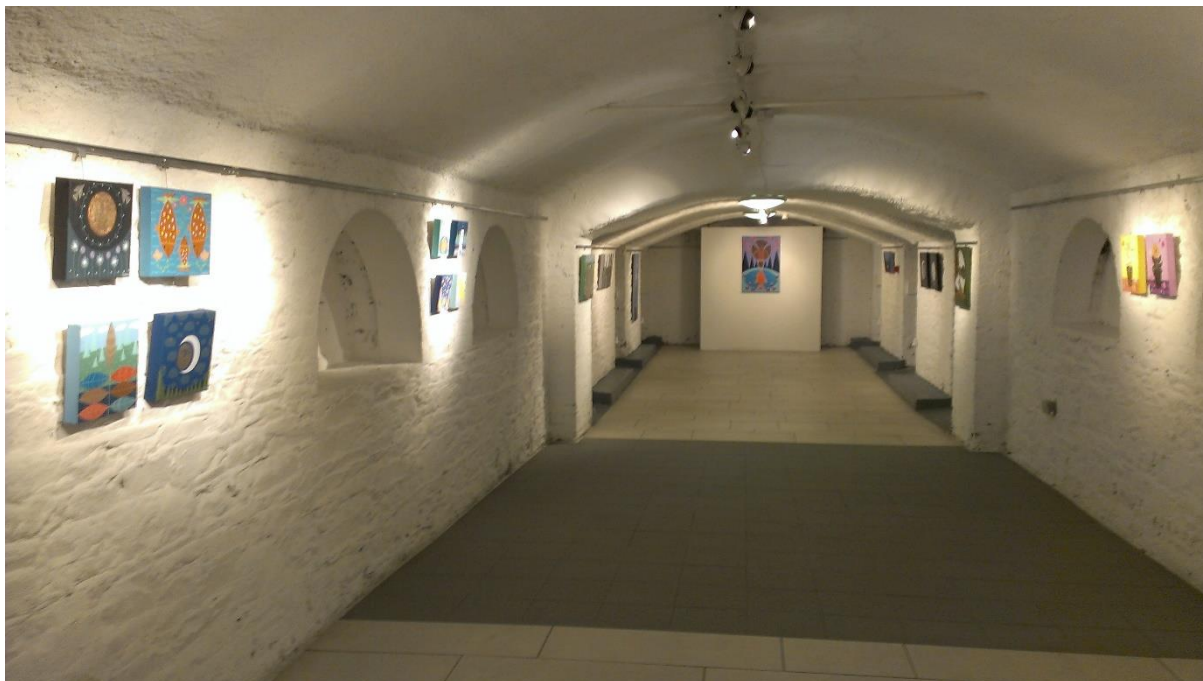
- Artist(s) CV (max three pages)
- Proposal for residency (500-1000 words). Clear reference must be made to the communities the artist would like to work with, proposed themes, outcomes, outreach, workshops and/or talks, as applicable.
- Portfolio with samples of current and previous work (max three pages)
- Two professional / academic references

Application deadline: Thursday, 28<sup>th</sup> of February 2019 at 5pm

Kindly supported by:



## THE BASEMENT GALLERY





## AN TÁIN ARTS CENTRE

